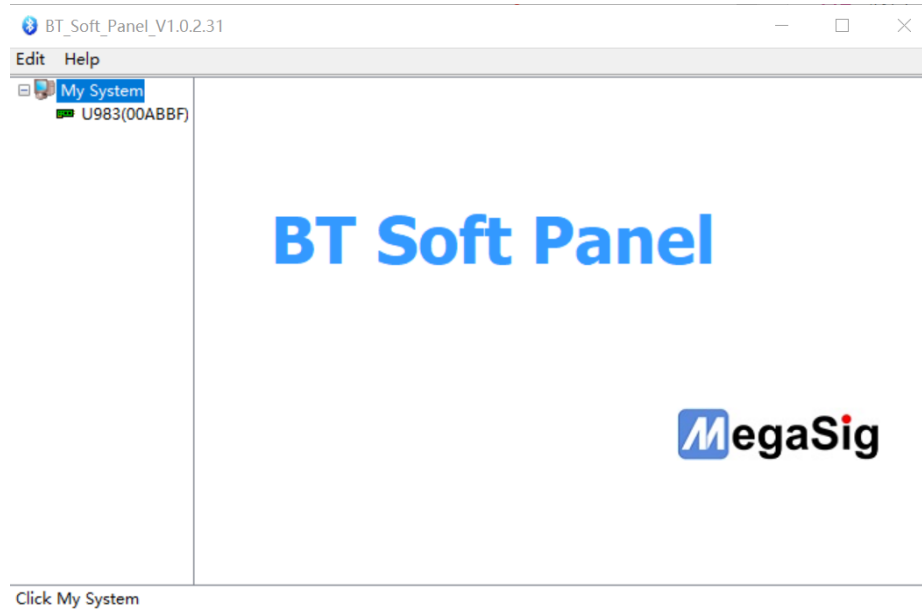


U983 User Manual

1、 Soft Overview

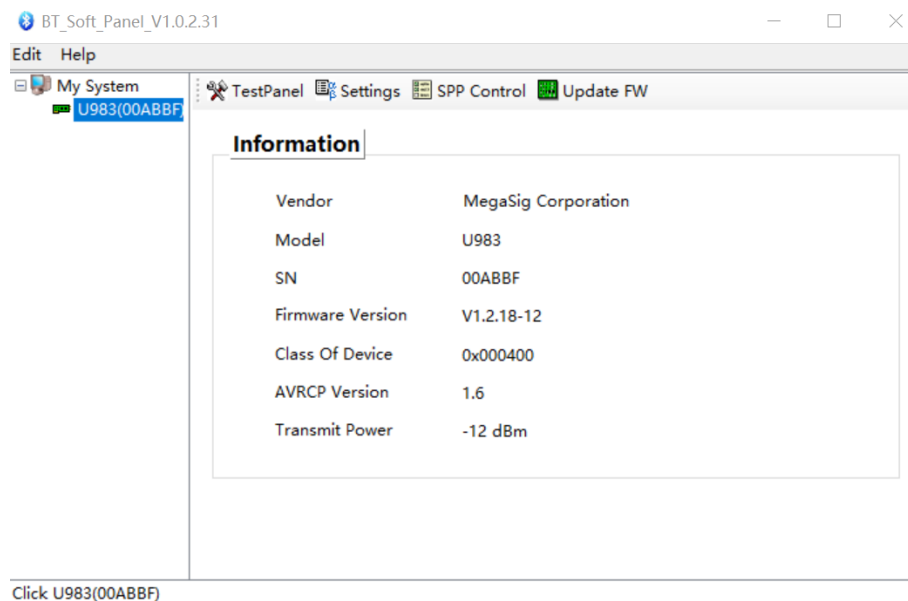
The main UI is concise and as show below.

After the device is powered on USB, the soft panel will automatically read the device



2、 Soft Operations

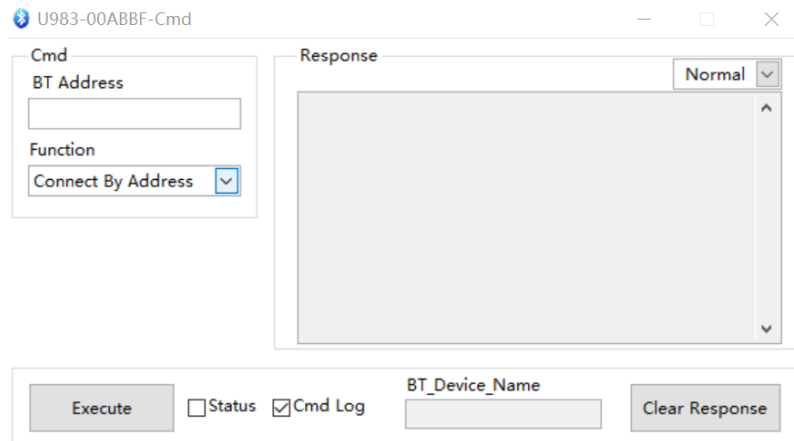
1. Choose device is show as below.



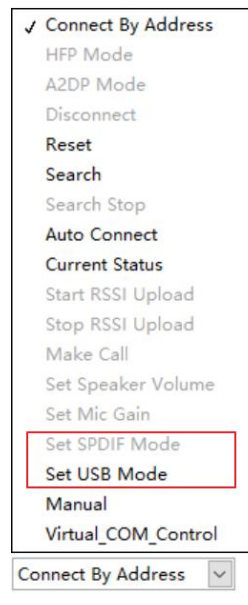
2. Click the "TestPanel", You can choose "BT_Cmd_Mode" or "BT_Scan_Mode".
"BT_Cmd_Mode": connect by mac address.
"BT_Scan_Mode": auto connect BT device.

This manual take the "BT_Cmd_Mode" as example.

3. Click "BT_Cmd_Mode", UI will be show as below.



4. About Function: If you want to use WDM driver to test, need to execute "Set USB Mode".
If you want to use SPDIF to test, need to execute "Set SPDIF Mode".



In the figure, "USB Mode" is gray, that is, the current dongle is in USB Mode.

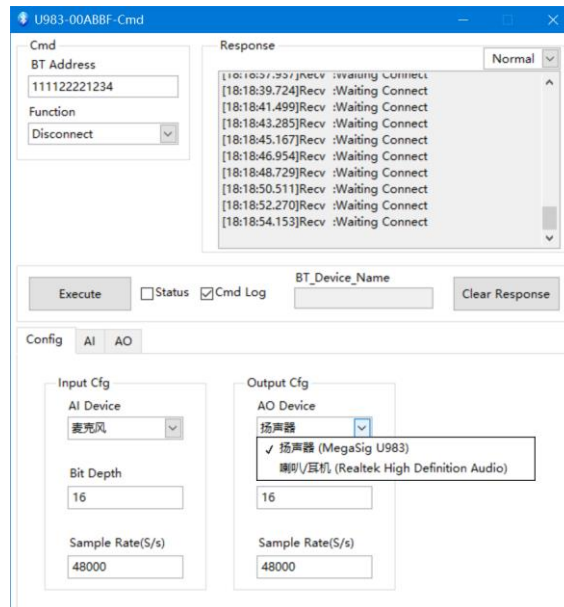
3、 Test Use

1. WDM Drive (USB Mode)

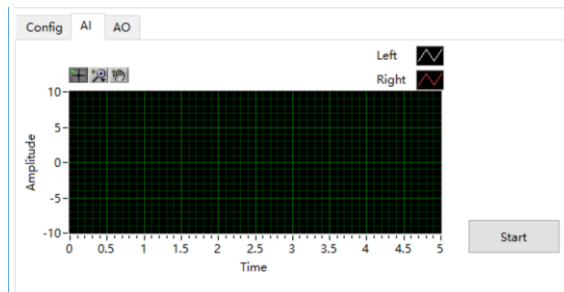
Input the “BT Address”, select the function of “Connect By Address”, and click “Execute” button, show as below.

In the “config”, you can edit input and output information.

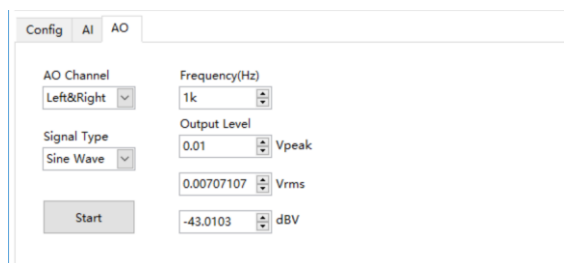
In the “AI” interface, you can check input signal. “AO” interface, setting output signal.



config



AI



AO

If the connection is successful, the dongle will set A2DP default mode, and we can use the valid sound card channel to test the speaker of DUT

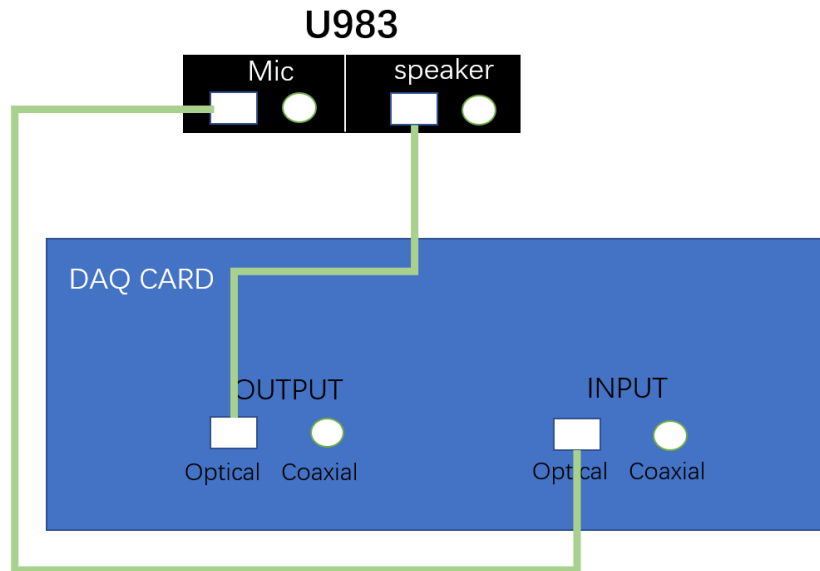
If you want to test mic, need to execute “HFP Mode”.

2. SPDIF Mode

In the SPDIF mode, you can use optical interface or coaxial interface to test Bluetooth devices. In this mode, you need to a DAQ card for test.

Optical wiring mode is shown in the figure.

Notice: speaker channels requires toggle switch to switch optical or coaxial interface.



If the connection is successful, the dongle will set A2DP default mode, and we can use the DAQ card output channel to test the speaker of DUT

If you want to test mic, need to execute "HFP Mode". We can get the mic signal by DAQ card input channel.